

# Global Cell Solutions

## Primary Cell Starter Kit

### Introduction:

The Global Eukaryotic Microcarrier (GEM) is a new generation culture surface for transformed, primary and stem cell culture. Composed of alginate and coated in adhesion molecules, the GEM transforms adherent cells into a pipette-able, magnetic substrate. Sample, dispense and transfer some or all of your cells just like a reagent. With the Cube Magnet or BioMagnet you can hold, pull, levitate, agitate and even rotate cells like never before. Now combine that with the ability to transfect, cryopreserve, assay and capture fluorescent images without removing the cells and you truly have the next generation of cell culture.

This Starter Kit includes all the materials needed to get started: GEMs, a low adhesion plate and magnets. The Primary Cell Starter Kit contains the three commonly used coatings for primary cell culture: gelatin, collagen I and fibronectin. Use these coated GEMs in place of traditional culture matrices.

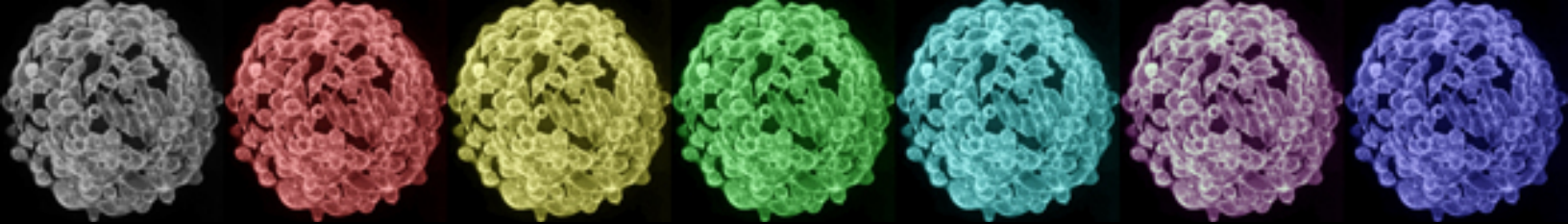
The 24-well ultra low adhesion (ULA) plate is specially prepared to inhibit the attachment of cells ensuring adhesion to the GEM. Additional sizes and layouts are available on our web site depending on your application.

Questions? Suggestions? We want to help! Please contact us at:

+1-434-975-4271, ext 103  
[support@globalcellsolutions.com](mailto:support@globalcellsolutions.com)

Two **strong** magnets are included as well. The stronger Cube Magnet is ideal for manipulating GEMs in solution. Rotate, hold or pull down GEMs easily. For levitating GEMs in the ULA plate use the BioMagnet. Its flat shape is ideal for applications requiring a broader application of the magnetic field.

Lastly, we've included the dissociation agent Accutase. Although we recommend keeping cells on the GEM throughout culture, assay and application we understand some applications require a cell suspension. Accutase is a trypsin alternative that is gentler on cells and doesn't require quenching with serum. Need a single cell suspension for flow cytometry or similar application? We also offer Accumax, which has all the dissociation power of Accutase while inhibiting the formation of cell-cell clumps in solution. See "Related Products" below for ordering information.



# Global Cell Solutions

**Catalog Number:** GKT-6001

**Kit Contents:**

- 2 mL gelatin GEM
- 2 mL collagen I GEM
- 2 mL fibronectin GEM
- One (1) 24-well Ultra Low Adhesion (ULA) plate
- One (1) Cube Magnet
- One (1) BioMagnet
- One (1) bottle Accutase (100 mL)

**Note: Do NOT thaw Accutase at 37° C (e.g. in a water bath). Thaw at room temperature or overnight at 4° C.**

**Storage and Disposal:**

- GEM - Store at 4° C and dispose of with biohazard waste.
- Cube Magnet - Store away from electronics and other devices affected by magnetic fields. A used plastic bottle makes a great container.
- BioMagnet - Store away from electronics and other devices affected by magnetic fields.
- Accutase - Store at -20° C until opened. Store at 4° after opening. Dispose of with biohazard waste.

**Related Protocols:**

- Culturing Cells Using the GEM
- Immunohistochemical Staining of Cells on the GEM

**Related Products:**

| Item                                | Catalog Number | Includes                    |
|-------------------------------------|----------------|-----------------------------|
| <b>GEM Supply Kit - Gelatin</b>     | GKT-7000G      | 2 mL GEM, 24-well ULA plate |
| <b>GEM Supply Kit - Collagen I</b>  | GKT-7000CI     | 2 mL GEM, 24-well ULA plate |
| <b>GEM Supply Kit - Fibronectin</b> | GKT-7000F      | 2 mL GEM, 24-well ULA plate |
| <b>Accutase</b>                     | GSP-0101-100   | 100 mL bottle               |
| <b>Accumax</b>                      | GSP-0102-100   | 100 mL bottle               |
| <b>60 mm ULA petri plate</b>        | GAA-2000       | 5 plates                    |
| <b>100 mm ULA petri plate</b>       | GAA-2001       | 5 plates                    |
| <b>6-well ULA plate</b>             | GAA-2002       | 1 plate                     |
| <b>24-well plate</b>                | GAA-2003       | 1 plate                     |
| <b>96-well plate</b>                | GAA-2004       | 1 plate                     |