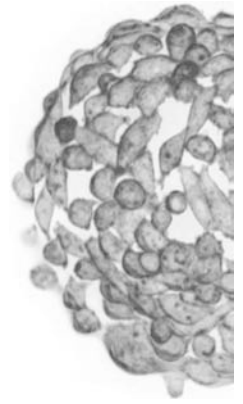


Global Cell Solutions Culture. Simplified.



## Protocol: Reconstitution of Lyophilized GEM

Questions? Suggestions? We want to help! Please contact us at:  
+1-434-975-4271, ext 103  
support@globalcellsolutions.com

This is a general method for reconstitution lyophilized GEM in order to being culturing cells on the microcarriers.

### Materials:

- Lyophilized GEM
- Media of choice
- 1000 $\mu$ L pipette and tips

1. Add cell culture media to the vial of lyophilized GEM.
2. Pipette up and down to mix thoroughly with the 1000 $\mu$ L pipette. Do not be concerned if GEM become stuck to the sides of the pipette tip. All of the vials of Global Cell Solutions lyophilized GEM are over filled to allow for some loss of GEM in this step.
3. If the cells you intend to use on the GEM™ are sensitive to HEPES buffered media, you may want to wash the GEM once before using.
4. Use the GEM according to protocol.

### Note:

Do NOT use water or buffer to reconstitute to GEM.